



LEGEND  
SAFARI VILLAS

Proud product of  
**LEGEND**



# LEGEND SAFARI VILLAS

## OVERVIEW

The villas provide the perfect luxury getaway in a true African Bushveld setting. No fences surrounding the units allows animals like Impala & Zebras to roam freely in front of your doorstep. The rooms, consisting of four or five individual bedrooms linked by walkways, offer accommodation of timeless elegance dedicated to relaxation and reflecting the African wilderness.





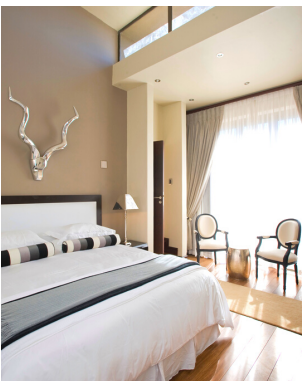
## ACCOMMODATION

Legend Safari Villas each offer a spacious and open plan layout, with a lounge and dining area as well as a fully equipped kitchen for self-catering getaways.

The luxurious African inspired interior with its natural palette contributes to the luxury that accompanies the relaxing atmosphere at every Legend Safari Villa.

## BREAKDOWN OF ROOMS

The Villas have a variety of 3, 4, 5 and 6 Bedroom Self-Catering Units to choose from.





## IN-ROOM FACILITIES

- Aircon
- Safe
- Smart Television
- Hair Dryer
- En-suite Bathroom Gowns
- Emergency Lights
- Self-Catering
- Ceiling fans in standard rooms
- Private pools at selected Villas



## RESORT FACILITIES

---

- Coffee/Tea station in Main Area
- Secure Parking
- Fully Equipped Kitchen
- Lounge Area
- Dining Room
- Patios & Dining Areas
- Braai Facilities
- Private pools at selected Villas
- Backup generators for main areas
- Mountain Bikes (included in rate)



# ON-SITE ACTIVITIES

---



## Game Drives:

The wildlife experience is impressive with more than 55 mammal species (including the Big 5), 300 plants species, 380 bird species & the wide variety of insects, reptiles and amphibians all co-existing in five spectacular diverse eco-systems including grasslands, bushveld, mountains and river beds. Encounter the supreme wildlife of Africa with qualified rangers in our open safari game vehicles.



## Guided Bush Walks:

The Predator Walks are undertaken by our qualified rangers in the Big 5 Entabeni Safari Conservancy, whilst Non-predator Walks take place at the resort and Botany Walks within the Botanical Gardens. Our trained rangers will show you a variety of animals and birds.



## Stargazing:

Stargazing can either be guided by one of our qualified rangers, or alternatively a professional astronomer can be hired in at a nominal fee. The conservancy is the perfect setting for spectacular views of the starry night sky.



# ON-SITE ACTIVITIES

---

## **Legend Health & Wellness Spa:**

Relax and rejuvenate mind, body and soul with Legend Health Spa's in-room Spa Treatments. Treat yourself to a variety of massage and beauty treatments, while you enjoy the tranquil backdrop of African bush.

## **Mini Golf:**

Young and old alike will enjoy a game of mini golf, situated at the resort's Monomotapa Village.

## **Mountain Biking:**

Mountain bike trails are available in the Botanical Gardens and guests can enjoy these scenic routes on their own mountain bikes.

## **Outdoor Cinema:**

An outdoor cinema provides a truly unique movie experience. Experience a bespoke movie night under the stars while enjoying the bushveld breezes and picturesque views of the bespoke Hanglip Mountain..





# ON-SITE ACTIVITIES

---

## Archery:

Enjoy this activity as a sporting outing, practice session, or skill-building with friend or family at our archery course.

## Quad Biking:

An adventure awaits you on 4 wheels, experiencing nature in its purest form. Guests can enjoy these scenic routes on their quad bikes.



## Hot Air Ballooning:

Rise to the occasion with our Hot Air Balloon experience and enjoy a sundown surrounded by picturesque views of the Entabeni Safari Conservancy.

## Horse Riding:

We offer 2 hour itineraries tailored to exceed expectations when it comes to combining adventure with luxury. Kick off your shoes and experience wildlife from the saddle. A true bucket-list activity!





## DIRECTIONS

### **Directions to Legend SafariVillas from Pretoria:**

Take N1 North Highway from Pretoria to Polokwane (Pietersburg). Keep on the N1 through Carousel and Kranskop Tollgates. Travel a further 32km on the N1. Take the Mookgophong (Naboomspruit) R101A offramp/exit (Route 289). Drive 8km to Mookgophong (Naboomspruit). Drive straight through the town of Mookgophong (Naboomspruit) on the R101A (29km) till you reach the Sterkrivier (Doorndraai Dam) turnoff (Legend Golf & Safari Resort signboard). Turn left and continue for 22km till you reach the Haakdoring turnoff. Turn left and continue for a further 3km on gravel road until you reach the traffic circle and the Great Enclosure of the Legend Golf & Safari Resort entrance on your right-hand side. Enter through the security check-point and park at Reception.

### **Road Directions to Legend Safari Villas from Polokwane:**

Travel through Mokopane (southerly direction) towards Mookgophong (Naboomspruit). Travel 17km till you reach the Sterkrivier (Doorndraai Dam) turnoff (Legend Golf & Safari Resort signboard). Turn right and continue for 22km until you reach the Haakdoring turnoff. Turn left and continue for a further 3km on gravel road until you reach the traffic circle and the Great Enclosure of Legend Golf & Safari Resort entrance on your right-hand side. Enter through the security check-point and park at reception.

For more information & bookings:  
012 443 6700  
[reservations@legendlodges.co.za](mailto:reservations@legendlodges.co.za)



Legend Safari Villas

[legendsafarivillas](https://www.legendsafarivillas.com)